



K-PLAST®

HDPE SINGLE / DOUBLE WALL
CORRUGATED PIPE

Your Reliable Choice for Subsoil Drainage/
Stormwater Drainage/ Sewer Piping



Corporate
Member of IGS



ISO 9001:2008 Reg No D59
Certificate No.:AJA10/14554

INTRODUCTION

K-Plast® corrugated Pipe is made from virgin High Density Polyethylene (HDPE), PE100, material which is resistant to corrosive attacks from acidic and alkaline soils and harsh chemicals found in industrial waste and municipal sewers, durable against abrasion. The virgin HDPE material assures the physical properties and the impact strength and longer service life term of the corrugated pipes which is minimum 50 years.

It is manufactured and conforms to DIN 16961 PT 1&2:1989. The pipes are available in both Single and Double wall. The corrugated pipes are light and resistance against shocks. They are neither affected by ground motions, nor deformed, as they are flexible.

K-Plast® corrugated Pipe is available in a wide of pipe sizes and can also be produced with perforations for difference applications. The perforated pipes are commonly used for subsurface drainage applications and non-perforated pipes which are used to move water by gravity flow from one point to another.

ADVANTAGES

- Higher mechanical resistance due to the structure
- Excellent chemical resistance
- Excellent abrasion resistance
- Economical and Cost Effective
- Excellent physical properties
- Lightweight and easy to handle
- Excellent Hydraulic Flow Capacity
- Strong and flexible, capable
- Customize modular length



SINGLE WALL CORRUGATED PIPE:

The single wall corrugated pipe comes with a corrugated interior and exterior. Sizes ranges from 32mm to 225mm in diameter. Both solid and perforated pipes are available. It can be buried up to 0.5m below ground.

APPLICATIONS

- Subsurface drainage
- Highway Edge Drains
- Golf Courses
- Parks
- Playing fields

Nominal Diameter (mm)	Inner Diameter (mm)	Outer Diameter (mm)	Length (m)
100	100	118	100 / coil
150	150	174	50 / coil
200	200	235	30 / coil
225	225	262	30 / coil



DOUBLE WALL CORRUGATED PIPE:

The design of the pipe consists of a twin wall construction which is corrugated outside and smooth inside with high compressive strength and impact resistance strength. The corrugated outer wall provides optimum strength under compressive loading. The smooth internal wall ensures excellent hydraulic flow and minimizes coefficient of friction. The pipe features an exceptional soil-tight joint and also available with built-in-bell-end-spigot for some ranges of pipes offered. 300mm - 800mm diameters equipped with bell-end spigot for ease of jointing.

APPLICATIONS

- Subsurface drainage
- Drainage pipe and Culvert
- Storm Water and Water Storage Tank
- Sewerage Application
- Manhole System
- Industrial Wastewater



Nominal Inside Diameter (mm)	Outer Diameter (mm)	Length (m)	Ring Stiffness S_{R24} (kN/m ²)
100	118	6	4 / 8
150	175	6	8 / 16
200	235	6	8 / 16
225	260	6	8 / 16
300	342	6	8 / 16
400	460	6	8 / 16
500	568	6	8 / 16
600	669	6	8 / 16
800	881	6	8 / 16

S_{R24} - 4 Cover Height up to 1m

S_{R24} - 8 Cover Height up to 3m

S_{R24} - 16 Cover Height up to 5m



JOINTING METHODS

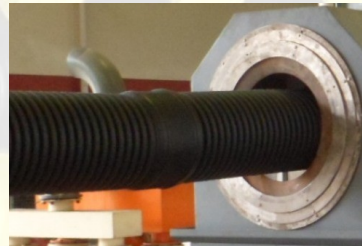
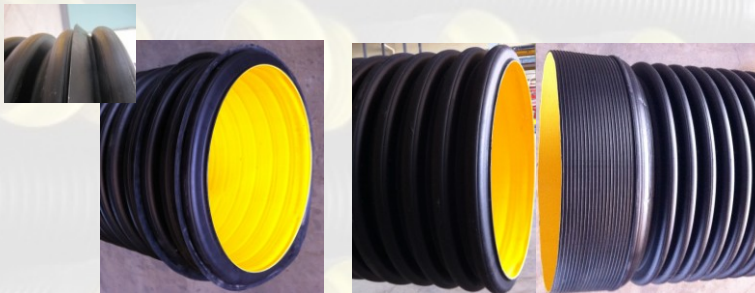
K-Plast® corrugated pipes can be joined and connected via the following methods:-

K-Plast corrugated pipes can be joined with push-fit sockets at each end for pipes having diameters between 100mm - 225mm. These push-fit sockets allow quick and problem-free assembly. Other fittings are also available for pipes connection depending on sites and project requirements. If required, fittings and adapters can also be made available for connection to existing pipe systems made from other raw material.



CONNECTION BY SOCKET WITH RUBBER RING

This method of connection can be applied for pipes having diameters between 300mm - 800mm. These pipes are equipped with built-in-bell-end-spigot and rubber seals which are provided for pipe connection.



For Full details and technical data, please contact us at:

Creative Polymer Industries Pte Ltd

201 Kranji Road
Singapore 739480
Tel: (65) 6261 6266
Fax: (65) 6261 3337
Email: info@cpi.com.sg
Website: www.cpi.com.sg

K-Plast Technology Sdn Bhd. (645306-V)

Lot 7012, Batu 23, Jalan Air Hitam,
81000, Kulai, Johor, Malaysia
Tel: (607) 652 3133
Fax: (607) 652 5133
Email: info@flexidrain.biz
Website: www.flexidrain.biz